



Sony Ericsson

Repair Movies

- mechanical -



MK16i, MK16a, Xperia TM Pro

CONTENTS

1	Movies	3
1.1	Disassembly	3
1.2	Reassembly	3
2	Revision History	4

To view the embedded repair movies in this document, Acrobat Reader version 8 (or later) and Flash Player version 8 (or later) must be installed on your computer.

***For best picture quality, select “Actual size” or “100%” as zoom level in Acrobat Reader.
To magnify while keeping an acceptable picture quality, increase the zoom level to 200%.***

***If the movies appear to be jerky or blurred when viewing on-line, this is probably caused by the connection speed being too slow.
In that case, right-click with the mouse on the document name and select Save Target As to download the repair movie document for off-line viewing.***

***For general information about repair movies, refer to
1220-1333: Generic Repair Manual - mechanical***

1 Movies

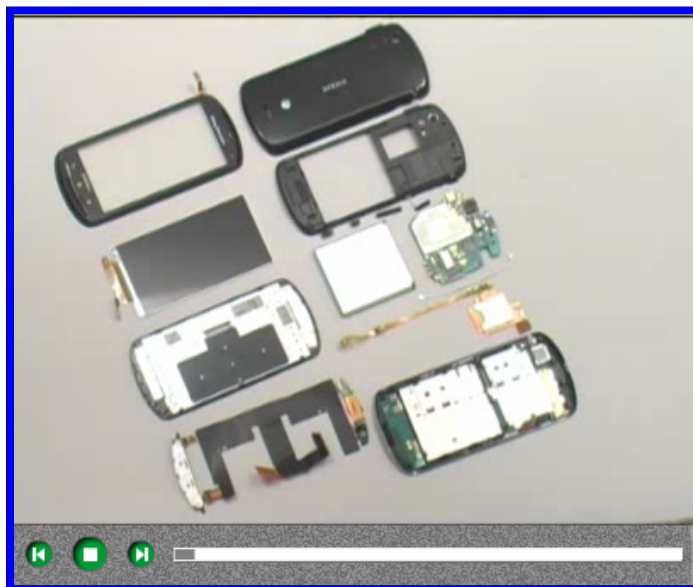
1.1 Disassembly

1. Cover Battery
2. Battery
3. Cover Lower Rear
4. Key On/Off (a) & Key Camera (b) & Key Volume (c) & Cap HDMI (d)
5. Main PBA (a) & Cable RF (b)
6. SIM Flex PBA Assy
7. Cover Lower Front
8. Sheet Screw
9. Front Cover Assy
10. 3.7inch TFT LCD
11. Slider Sub Assembly (a) & Slider Flex FPC Assy (b)



1.2 Reassembly

1. Slider Sub Assembly (a) & Slider Flex FPC Assy (b)
2. 3.7inch TFT LCD
3. Front Cover Assy
4. Sheet Screw
5. Cover Lower Front
6. SIM Flex PBA Assy
7. Main PBA (a) & Cable RF (b)
8. Key On/Off (a) & Key Camera (b) & Key Volume (c) & Cap HDMI (d)
9. Cover Lower Rear
10. Battery
11. Cover Battery





2 Revision History

Rev.	Date	Changes / Comments
1	2011-Aug-05	Released
2	2011-Aug-11	Update model name